

E-Blast #4
June 28, 2022



Imagine

JAMESTOWN MALL
REDEVELOPMENT



SEE YOU TOMORROW!!

Just a friendly reminder that the first public forum for the Jamestown Mall Market Analysis and Feasibility Study will be held tomorrow.

Wednesday, June 29th

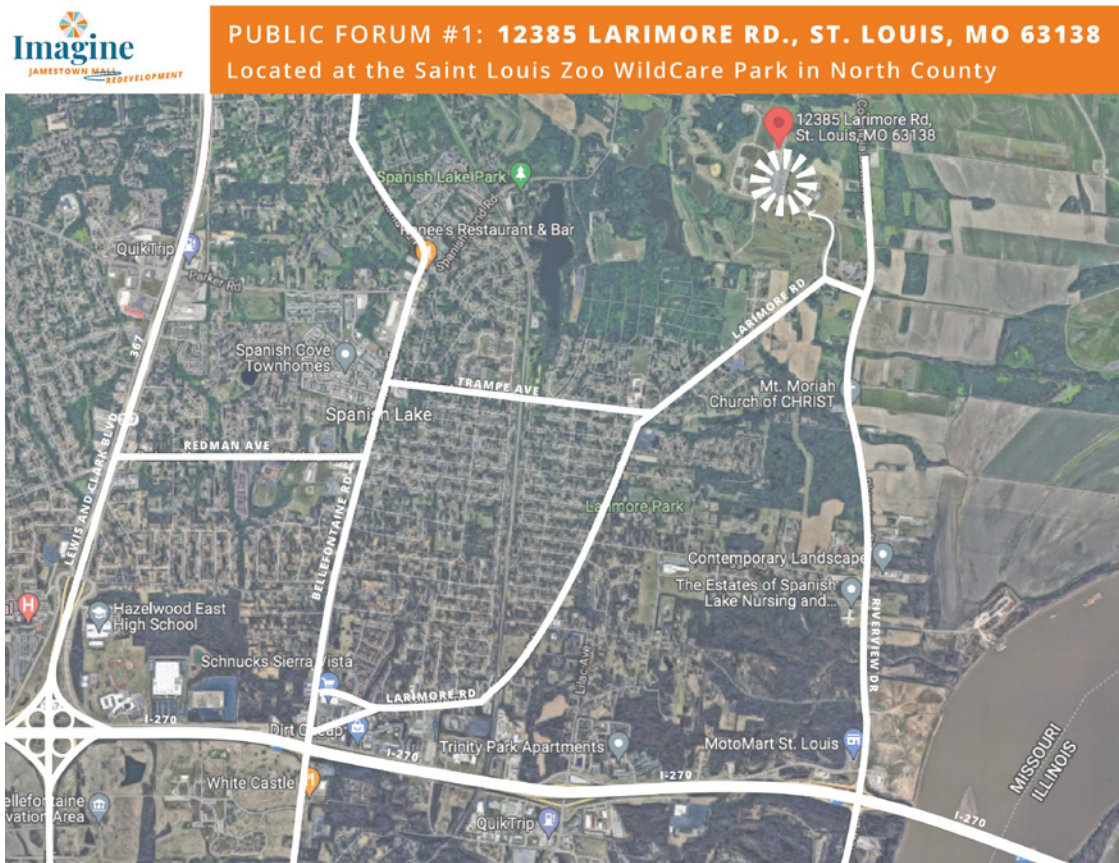
4:30 - 7:30 pm

at

Saint Louis Zoo's WildCare Park (North County Campus)

12385 Larimore Road, St. Louis, MO 63138

This meeting will use an open house style format where attendees will have the opportunity to talk one-on-one with team members while reviewing and offering feedback on the initial six land use scenarios. Attendees will also have the opportunity to weigh-in on development principles and prioritize evaluation criteria. No formal presentation will be given, so stop by anytime between 4:30 – 7:30pm. Share with your neighbors, mark your calendar, and plan on joining us at the Zoo's WildCare Park on tomorrow evening. Let's work together to reimagine Jamestown Mall.



Saint Louis Zoo WildCare Park: Mask Policy

For the Public Forum, attendees are recommended to wear masks. Please continue to be kind and considerate of others' decision to wear or not wear masks. For those who cannot attend in person (or feel uncomfortable attending in person), meeting materials will be available on the website www.ImagineJamestownMall.com along with a comment form that can be filled out until July 15th.



Copyright © 2022 Imagine Jamestown Mall Redevelopment C/O Added Dimension, LLC, All rights reserved.

You have received this email from Added Dimension, LLC.

Our mailing address is:

Imagine Jamestown Mall Redevelopment C/O Added Dimension, LLC
3898 Old HWY 94 South Unit 3
Saint Charles, MO 63304

[Add us to your address book](#)

Want to change how you receive these emails?
You can [update your preferences](#) or [unsubscribe from this list](#).

